

Here is your May 2026 edition of the Kent Police Department Community Education E-Newsletter! This is our way to keep you informed of crime trends, crime stats, Kent PD events, Kent PD programs, and more. As a reminder, you can expect our e-newsletter sent to your inbox on the last day of each month.

### Inside this Edition

1. Kent PD Community Support Unit Programs and Information
2. Kent PD events and Information
3. Stay connected

### Kent PD Community Support Unit Programs and Information

#### Get to Know Your Neighbors! Set Up A Block Watch!

As the weather is getting nicer, and we come out of our homes to see the sunshine, this is the perfect time to get to know your neighbors. Knowing your neighbors is the first step in setting up a neighborhood Block Watch, which has many benefits:

- **Enhances Crime Prevention**
  - Encourages residents to stay alert and report suspicious activity
  - Acts as a visible deterrent to theft, vandalism, and other crimes
- **Promotes Community Awareness**
  - Keeps neighbors informed about local safety concerns
  - Helps identify unusual patterns or activities early
- **Strengthens Neighbor Relationships**
  - Builds trust through regular communication and interaction
  - Encourages a sense of belonging and mutual support
- **Improves Quality of Life**
  - Creates cleaner, safer, and more welcoming neighborhoods
  - Inspires shared responsibility for community well-being
- **Fosters Partnership with Law Enforcement**
  - Opens lines of communication with local police
  - Provides access to safety resources, updates, and guidance
- **Encourages Simple Acts of Support**
  - Neighbors help watch homes, collect mail, or check in on each other
  - Builds a culture of care and cooperation

- **Easy to Start and Maintain**
  - Requires minimal resources—just communication and commitment
  - Can be organized through meetings, group chats, or social media
- **Reduces Isolation**
  - Helps residents feel more connected and supported
  - Creates a stronger, more unified community

For more information on setting up a new Block Watch or reviving an old one, reach out to your Community Education Coordinator. Their contact is at the end of the newsletter.

### National Night Out Registration Opening Soon!

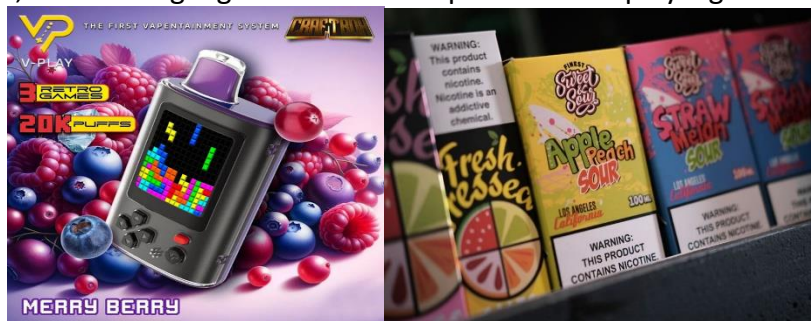


One of the best ways to get to know your neighbors is to host a National Night Out event! This year, National Night Out is on Tuesday August 4<sup>th</sup>. Neighborhood throughout Kent host a get together with potlucks, games, food trucks, music and more. We will send teams made up of the mayor’s office, police, parks, and public works for example, to visit your events.

Registration opens on Monday May 3<sup>rd</sup> so be sure to visit [www.kentwa.gov/nno](http://www.kentwa.gov/nno) to register and for more information on hosting an event! ***You must register through our site to get visitors and swag bags.***

### Coalition Corner: Vaping & Teens

Some may believe that vaping is completely safe. However, there are significant risks to be aware of – especially for young people. We continually hear of students as young as 11 or 12 years old vaping. The vaping industry develops vaping products that appeal to teens. They are colorful, flavorful, look like highlighters or even require them to play a game to “win”.



The early we work on prevention, the better. Here are only a few of the impacts of vaping on young people.

Exposure to nicotine – Vaping exposes young people to nicotine at a time when the brain is at risk for addiction. Did you know that the brain continues to develop until early adulthood, age 25-30. Youth who vape are affected much more than adults by nicotine.

Exposure to toxic chemicals and other harmful ingredients – Vapes contain several chemicals, metals and ultrafine particles. These are poisonous when heated to form an aerosol and then inhaled. Because of their chemical ingredients, certain popular flavors – such as cinnamon, vanilla, butter and mint are especially harmful. These components can seep into the e-liquid and enter the lungs when heated and inhaled, causing mild to severe lung damage.

Cardiovascular, respiratory, reproductive, and immunity effects – Nicotine and other chemicals in vapes are being tied to increasing heart rate and blood pressure and the risk of heart attack and stroke, as well as inflammation, asthma and wheezing. It can also cause inflammatory processes and depress immune function in lungs and are associated with chronic bronchitis and reduced ability to fight off bacterial and viral infection.

This information was taken from the Partnership to End Addiction. For the whole article and a Vaping Guide for Parents, visit <https://drugfree.org/article/effects-of-vaping-on-teens/>

### **Kent Police Student Board**

The Kent Police Student Board is looking for students' grades 7-12 to be a part of this great group that focuses on leadership development and student health and wellness! We meet 2-3 times per month on Wednesdays during the school year. It's ok if students are involved in sports and other activities. Most members are involved in other things and can make it work. We plan a student conference for Kent middle and high schools, as well as other community based projects. Through being a part of the board, students get to meet others from different schools, network with city and community leaders and at the end, have something great to put on a resume or college application! Here is a video link for our 2026 Game of Life Conference: <https://vimeo.com/1168296326/c13cffba7b>. For more information, email [sjudd@kentwa.gov](mailto:sjudd@kentwa.gov).

### **Kent PD – Event Request Form**

Kent PD now has an event request form to request involvement of Kent PD at a meeting or event taking place. We hope this will streamline event or meeting requests from the community to our initial intake and event review process. Once the form is submitted online, you will have a response from a member of the Community Education Unit confirming your request and will work to have someone from the department attend. Here is the form! [Event Participation Request Form Page | City of Kent \(kentwa.gov\)](#) Just fill it out as completely as possible and click submit!

## Kent PD Events and Information

There are a lot of upcoming meetings and community events headed to Kent. Get these on your calendar!

### Free Webinar “Ins and Outs of Boosters: What Parents and Caregivers Need to Know”

May 12, 2026, 12:00 p.m.

Register: <https://www.surveymonkey.com/r/InsandOutsofBoosters>

Join King County’s Target Zero Coalition for this free and informative 90-minute webinar focused on the important transition from into and out of a booster seat. Learn when to know whether your child is ready to move into a booster, and when they are big enough to fit just the seat belt alone. Learn critical information that is going to help keep your elementary school child as safe as possible in the car.

### Kent Bicycle Advisory Board Bike Rodeo

Save the date for the Kent Bicycle Advisory Board’s annual bike safety rodeo! May 16<sup>th</sup> at the Kent YMCA located at 10828 SE 248<sup>th</sup> Street from 10:00am – 1:00pm. Bring your kiddos and their bikes (and helmets!) and get a bike tune up and ride the bike course with Kent officers! It is a great event and we love interacting with members of our community. Hope to see you there!!

### Save the Date: Kent Police Teen Academy

Registration is now open for the Kent PD Teen Academy. The academy will take place June 22-25 from 9:00-4:00pm each day. It is for Kent School District 2026-27 sophomores, juniors, seniors and 2026 graduates. The structure is all new this year, so even if a student has done it before, this will be new to them! Students will work a mock case from start to finish and learn about patrol procedures, witness interviews, evidence collection and more. They will also learn about units within the department such as SWAT, K9 and Drones. Applications are due May 22nd. For the application, requirements and more information,

visit [https://www.kentwa.gov/.../police.../community-](https://www.kentwa.gov/.../police.../community-education)

[education](https://www.kentwa.gov/.../police.../community-education) Questions? Contact Stacy Judd at [sjudd@kentwa.gov](mailto:sjudd@kentwa.gov) or 253-856-5883



## Stay Connected

You can find out more information about these programs and events by visiting our website at [www.kentwa.gov/police](http://www.kentwa.gov/police) and click on “Community Education” on the left tool bar. We are also very active on social media so be sure to follow us:

Facebook      <https://www.facebook.com/kentpolicedepartment>  
Instagram      @kentpolicewa  
Twitter      @kentpd

## Community Education Contacts

Valley/West Hill: Sara Hallstead [shallstead@kentwa.gov](mailto:shallstead@kentwa.gov) 253-856-5856

East Hill: Stacy Judd [sjudd@kentwa.gov](mailto:sjudd@kentwa.gov) 253-856-5883