

Separate Event for Hazardous Waste Disposal

FREE EVENT



Wastemobile

Safely dispose of hazardous waste at no cost at the Wastemobile, which hosts temporary collection sites around King County.

Next local Wastemobile event

March 6, 7 & 8, 2020
10 a.m. - 5 p.m.

Kent Fire Station #75
15635 SE 272 St
Kent/Covington

To find more dates, locations, times and see all accepted items visit, hazwastehelp.org or call 206-296-4692.



March 7 • 9 a.m. - 3 p.m.
Hogan Park

- For more information or alternative formats on request please call 253-856-5589 or TDonati@KentWA.gov TTY Relay: 711. Monday - Friday 8 a.m. - 5 p.m.
- Can't make it to the event? Visit "What do I do with...?" at kingcounty.gov/whatdoidowith for organizations that accept items for reuse, recycling or proper disposal.
- This program is only for household materials from King County residents. Funded by City of Kent Public Works Department, King County Solid Waste Division, the Hazardous Waste Management Program in King County, and Washington State Department of Ecology.

Printed on recycled paper

Kent Residential RECYCLING Collection Event



Only listed items will be accepted – no exceptions. **Questions?** Call 253-856-5589 before March 6

About Kent's Recycling Collection Event

Each spring, summer and fall, the City of Kent hosts a recycling collection event that allows residents to dispose of recyclable items that are not normally accepted at the curb. Instead of going to the landfill as trash, all items collected at the event will be reused or recycled! Visit KentWA.gov/TalkingTrash for details.

Please DO NOT bring the following items to this March event:

Artificial trees	Construction/demolition debris
Carpeting	Paint (latex or oil-based)
Concrete, asphalt, rock, brick or sand	Plastic pools, toys, hoses, etc.
Garbage	Window glass/mirrors
Hazardous waste: antifreeze, fluorescent bulbs and tubes, motor oil, filters and petroleum-based products	

Next recycling event: Saturday, June 6 - Kent Phoenix Academy

City of Kent
Environmental Program
220 4th Ave. S.
Kent, WA 98032

PRSR.T. STD.
U.S. POSTAGE
PAID
KENT, WA
PERMIT NO. 137

ECRWSS Postal Customer

Saturday, March 7 • 9 a.m. - 3 p.m.

FREE EVENT

Hogan Park | 24400 Russell Road, Kent 98032
No vehicles may enter after 3 p.m. No commercial loads



KentWA.gov/TalkingTrash



Bulky Household Items



Mattresses, Box Springs and Futons

Mattresses, box springs and futons only, any size. All items must be clean and dry. Please cover in the event of rain.

WILL NOT ACCEPT:

Wet or soiled items, furniture, frames. Vendor reserves the right to refuse any item deemed unacceptable or unrecyclable.

Household Refrigerators and Freezers

WILL NOT ACCEPT:

Industrial refrigerators or freezers



Household Air Conditioners, Dehumidifiers

Porcelain Toilets and Sinks

Toilet seats and base wax rings must be removed.

No commercial loads

Secure Your Load For Safer Roads!



It's the Law!

Shredding

Shredding

Shredding and recycling of confidential paper materials. Staples okay. No binder clips.

LIMIT: 3 file-size (12"x12"x16") boxes or equivalent quantity per vehicle – no exceptions.



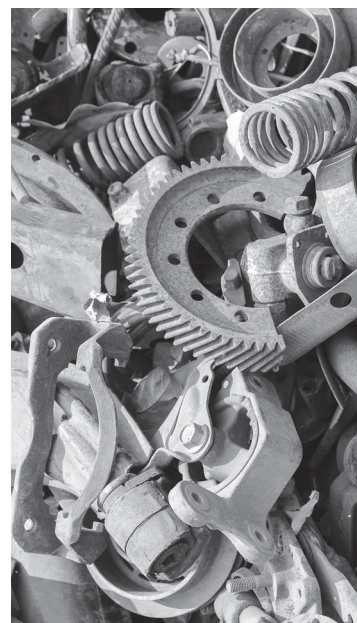
Garage & Yard

Scrap Metal

- Aluminum
- Auto parts
- BBQs
- Brass
- Cast iron sinks & tubs
- Copper
- Dishwashers
- Dryers
- Engines
- Ferrous metals
- Iron
- Lawn mowers
- Metal lawn chairs
- Microwaves
- Non-ferrous metals
- Ovens
- Steel
- Stoves
- Swing sets
- Washers
- Water heaters

WILL NOT ACCEPT:

Metals that are insulated, rubber-coated, oily, previously or currently contain chemicals, paint or hazardous materials. Light fixture ballasts or sealed drums.



Bulky Yard Debris and Scrap Wood

- Branches (greater than 4" diameter)
- Logs
- Clean wood and plywood
- Pallets

All wood should be unpainted, untreated, and unstained. Please lay a tarp under materials for easy removal.

WILL NOT ACCEPT:

Blackberry bushes, brush, grass clippings, leaves, painted, stained, treated or laminated wood or particle board, small branches, sod or stumps.



Propane Tanks

- Empty residential tanks
- Empty camping stove tanks

Tires: Car, Light Truck and Motorcycle

Bias ply, steel belted, and studded tires accepted. **Limit 10 passenger tires per household** (18 inches and below).

WILL NOT ACCEPT:

- No oversized tires or truck/semi truck tires accepted.
- No bicycle tires accepted

Household Items

Batteries

- AAAA, AAA, AA, A, B, C, D and 9V cell batteries
- Cellphone
- Lead acid
- Rechargeable

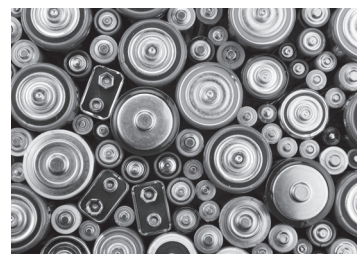
Please sort large quantities by type

Styrofoam

White Styrofoam blocks. Expanded polystyrene styrofoam only. Packing peanuts. Look for #6 or EPS inside the recycling symbol. Peanuts need to be in box or bag. Clean and dry materials only.

WILL NOT ACCEPT:

Urethane foam cushions, hot tub covers, expanded polypropylene or foam insulation.



Electronics

- Cell phones
- DVD/Blu-ray players
- Holiday lights
- Keyboards
- Mice
- Microwaves
- Printers/Fax machines
- Remote controls
- Scanners
- VCRs
- Wires

WILL NOT ACCEPT:

TVs, computers, laptops, monitors (drop off at E-Cycle Washington sites, including the Kent Goodwill and Value Village) ecyclewashington.org.

Reusable Household Goods and Textiles

Clean clothing and miscellaneous household items in good condition.

WILL NOT ACCEPT:

- Wet, broken or damaged items
- Furniture

Cardboard

Please flatten

WILL NOT ACCEPT:

Wax-coated cardboard

enr12/31/18_1_20