

Separate Event for Hazardous Waste Disposal



Household Hazardous Waste Disposal Location

• Saturdays & Sundays
 Auburn
 10 a.m. - 5 p.m.

The Outlet Collection
 1101 Outlet Collection Dr SW
 (next to Nordstrom Rack)

To find more dates, locations, times and see all accepted items visit hazwastehelp.org or call 206-296-4692.



City of Kent
 Environmental Program
 220 4th Ave. S.
 Kent, WA 98032

PAID
 KENT, WA
 PERMIT NO. 137

October 20 • 9 a.m. - 3 p.m.
 Hogan Park

- For more info, alternative formats, or disability accommodations on request call 253-856-5589 or tdonat@kentwa.gov
 TTY Relay: 711. Monday-Friday 8 a.m. - 4:30 p.m.
- Can't make it to the event? Visit "What do I do with...?" at kingcounty.gov/whatdoiwit for organizations that accept items for reuse, recycling or proper disposal.
- This program is only for household materials from King County residents. Funded by: City of Kent Public Works Department, King County Solid Waste Division, the Local Hazardous Waste Management Program in King County and Washington State Department of Ecology.

About Kent's Recycling Collection Event

Each spring, summer and fall the City of Kent hosts a Recycling Collection Event that allows residents to dispose of recyclable items that are not normally accepted at the curb. Instead of going to the landfill as trash, all items collected at the event will be reused or recycled! Visit KentWA.gov/TalkingTrash for details.

Please DO NOT Bring the Following Items to this October event:

Bulky Yard Debris / Scrap Wood	Construction/ Demolition Debris
Motor oil, filters, antifreeze or petroleum based products	Garbage/Hazardous Waste
Fluorescent bulbs or tubes	Plastics
Window glass/ mirrors	Plastic pools, toys, hoses
Carpeting	Paint (latex or oil based)

Next Recycling Event

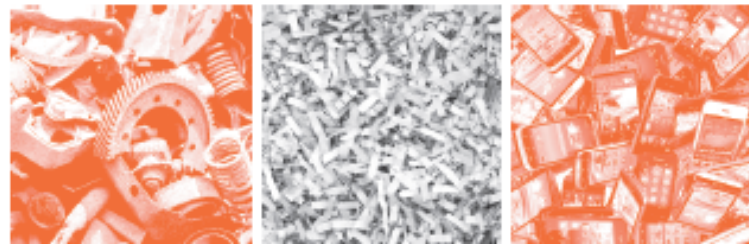
Saturday, March 9 - Hogan Park • KentWA.gov/TalkingTrash

ECRWSS Postal Customer

Saturday, October 20 • 9 a.m. - 3 p.m.

Hogan Park | 24400 Russell Road, Kent 98032

No vehicles may enter after 3 p.m.



KentWA.gov/TalkingTrash



Bulky & Refrigerant Appliances



Mattresses, Box Springs and Futons

Mattresses, box springs, and futons only, any size. All items must be clean and dry. Please cover in the event of rain.

NOT ACCEPTED:

Wet or soiled items, furniture, frames. Vendor reserves the right to refuse any item deemed unacceptable or unrecyclable.

Household Refrigerators, Freezers

NOT ACCEPTED

Industrial refrigerators and freezers



Household Air Conditioners, Dehumidifiers

Porcelain Toilets and Sinks

Toilet seats and base wax rings must be removed

No commercial loads

Secure Your Load
 For Safer Roads!

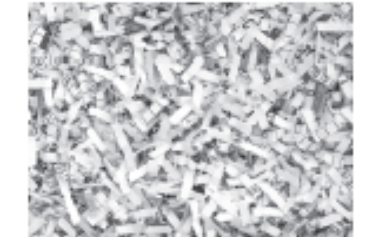


It's the Law!

Shredding

Shredding and recycling of confidential paper materials. Staples okay. No binder clips.

LIMIT: 3 file-size (12"x12"x16") boxes or equivalent quantity per vehicle - no exceptions.



Garage & Yard



Scrap Metal

- Washers
- Dryers
- Dishwashers
- Ovens
- Stoves
- Water Heaters
- Engines
- Microwaves
- BBQ's
- Lawn Mowers
- Metal Lawn Chairs
- Swing Sets
- Cast Iron Sinks & Tubs
- Auto Parts
- Iron
- Steel
- Aluminum (cars included)
- Brass
- Copper
- Ferrous Metals
- Non-Ferrous Metals

NOT ACCEPTED:

Metals that are insulated, rubber coated, oily, previously or currently contain chemicals, paint or hazardous materials. Light fixture ballasts or Sealed drums.

Propane Tanks

- Empty residential tanks
- Empty camping stove tanks

Tires: Car, Light Truck & Motorcycle

- Bias ply, steel belted, and studded tires accepted. Limit 10 passenger tires per household (18 inches and below) free of charge. Tires on rims are \$3.50 each. Cash payment only.

NOT ACCEPTED:

No oversized tires or truck tires accepted.

Concrete, Asphalt, Rock, & Brick

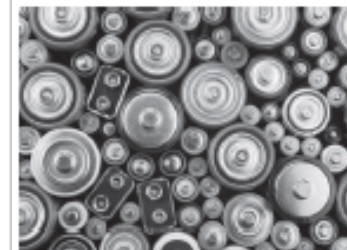
Place on tarp for easy removal. Rocks and smaller materials must be in boxes or buckets. Remove plastic, metal and wood. Residential material only.

NOT ACCEPTED:

Bags and sand



Household Items



Batteries

- AAAA, AAA, AA, A, B, C, D and 9V cell batteries
- Lead acid batteries
- Rechargeable batteries
- Cellphone batteries

Please sort large quantities by type

Styrofoam

White Styrofoam blocks. Expanded polystyrene styrofoam only. Packing peanuts. Look for #6 or EPS inside the recycling symbol. Peanuts need to be in box or bag. Clean and dry materials only.

NOT ACCEPTED:

Urethane foam cushions, hot tub covers, expanded polypropylene or foam insulation.

E-Waste

- Printers/fax machines
- Mice
- Keyboards
- Wires
- Scanners
- DVD/blu-ray players
- VCRs
- Cell phones
- Microwaves
- Holiday lights

NOT ACCEPTED:

TV's, Computers, Laptops, Monitors (Drop off at E-Cycle Washington sites, including the Kent Goodwill and Value Village) ecyclewashington.org

Reusable Household Goods/Textiles

Clean clothing and miscellaneous household items in good condition

NOT ACCEPTED:

- Wet, broken or damaged items
- Furniture

Cardboard

- Please flatten

NOT ACCEPTED:

- Wax-coated cardboard

Only listed items will be accepted - no exceptions. Questions? Call 253-856-5589 before October 19